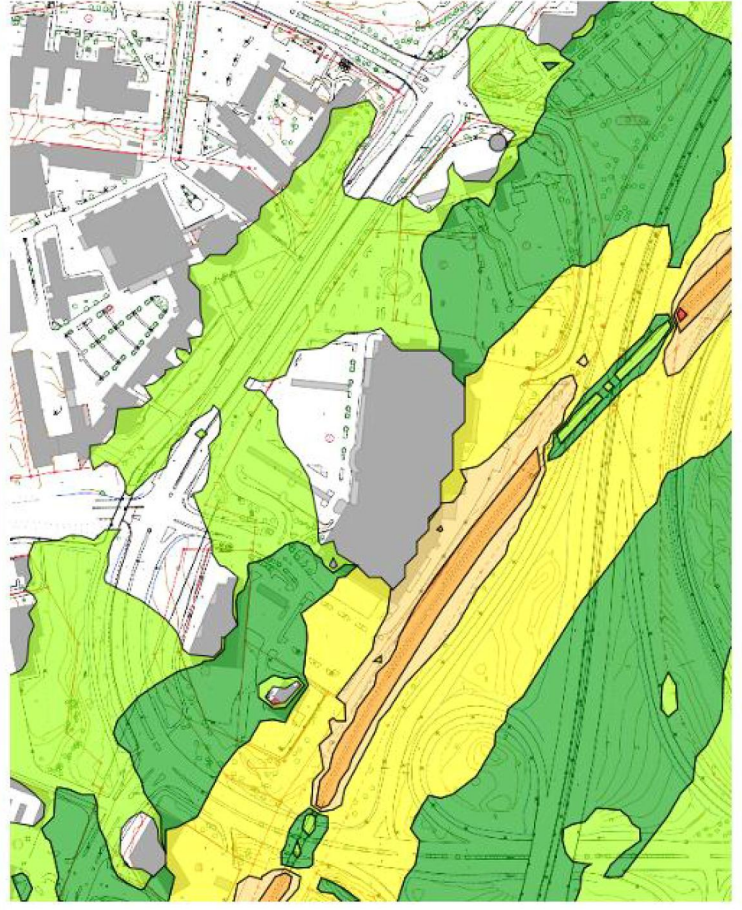
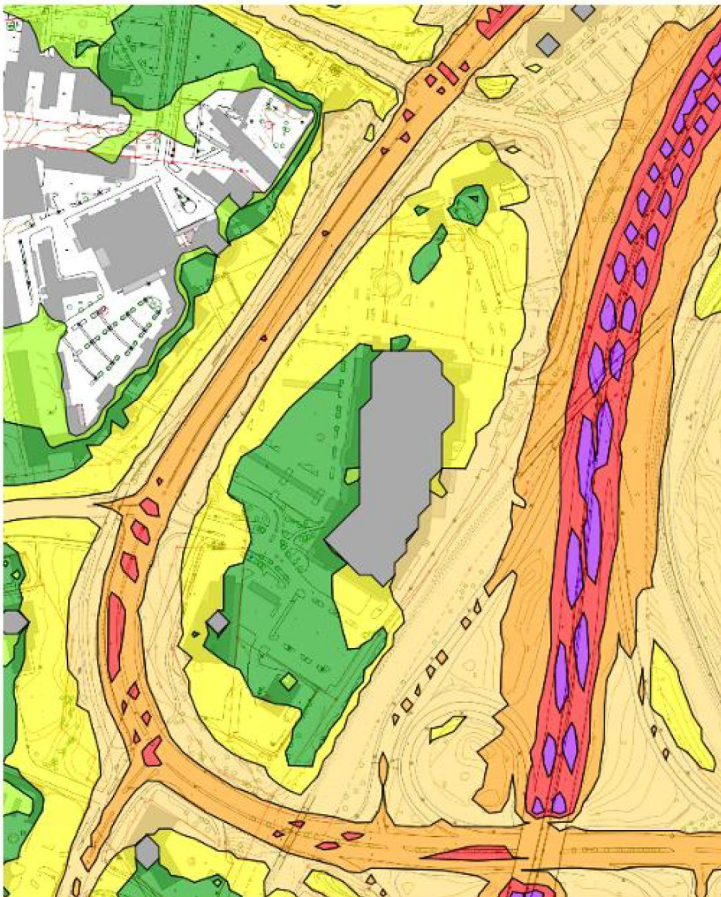


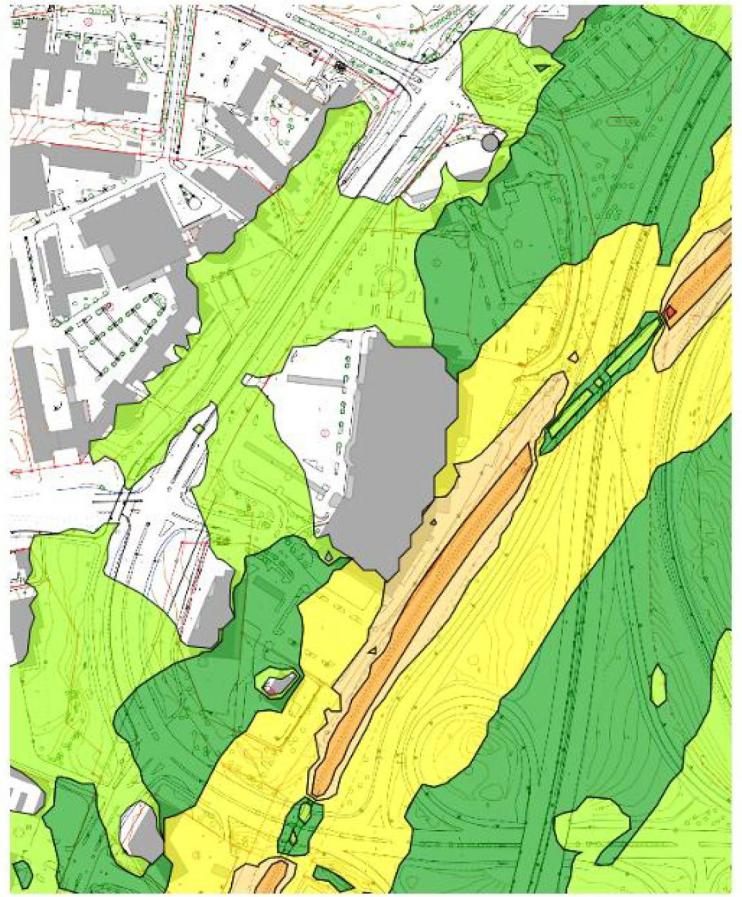
Tieliikennemelu, päivä, 2016




Raideliikennemelu, päivä, 2016





Tieliikennemelu, yö, 2016





Raideliikennemelu, yö, 2016

 Melutaso 75-80 dB

 Melutaso 65-70 dB

 Melutaso 55-60 dB

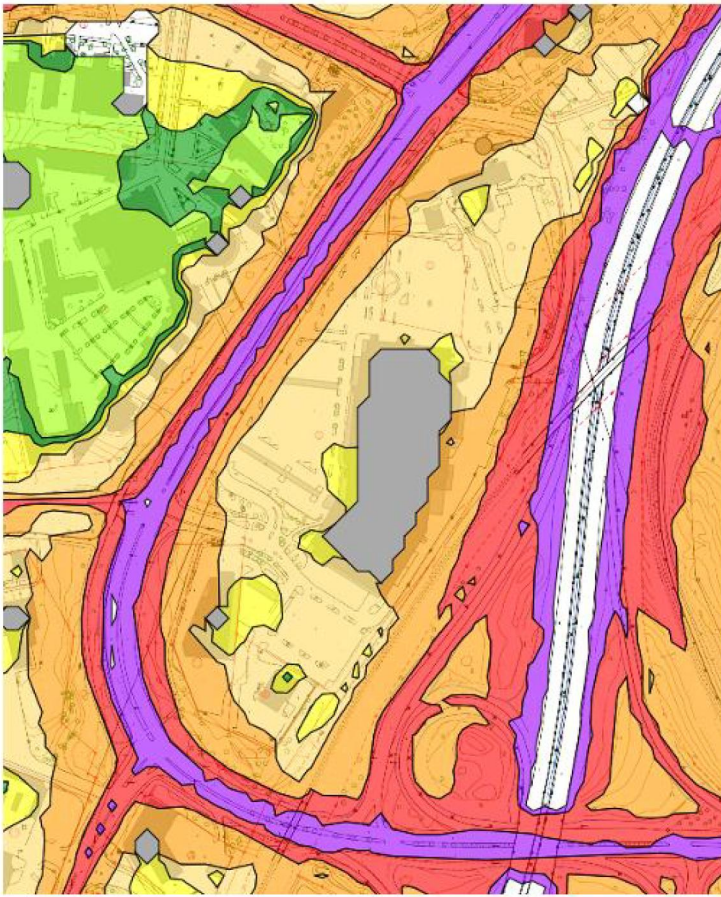
 Melutaso 70-75 dB

 Melutaso 60-65 dB

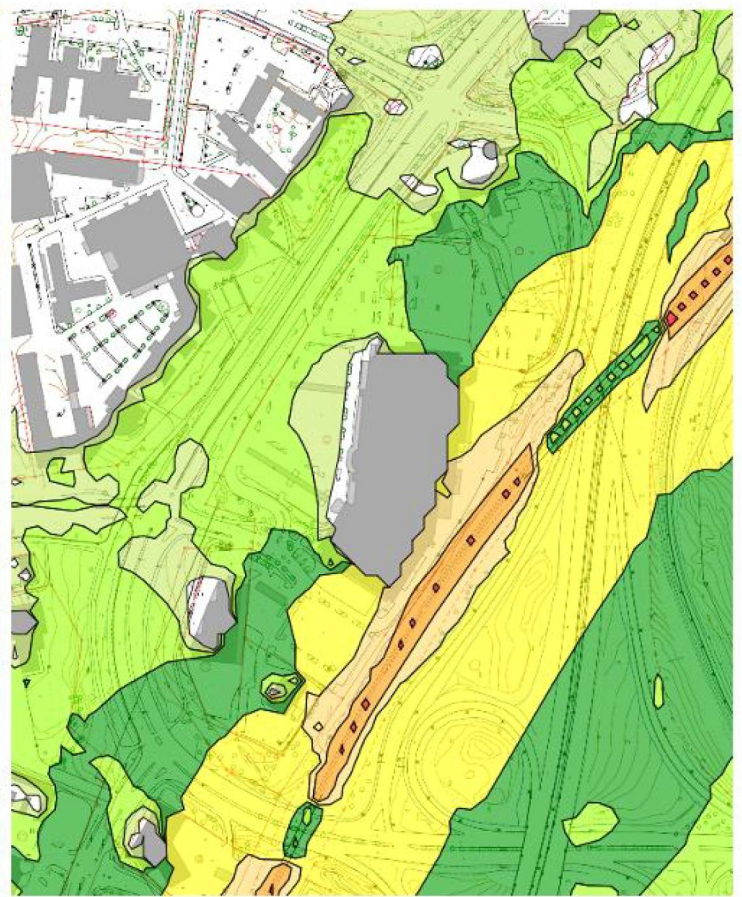
 Melutaso 50-55 dB

 Melutaso 45-50 dB

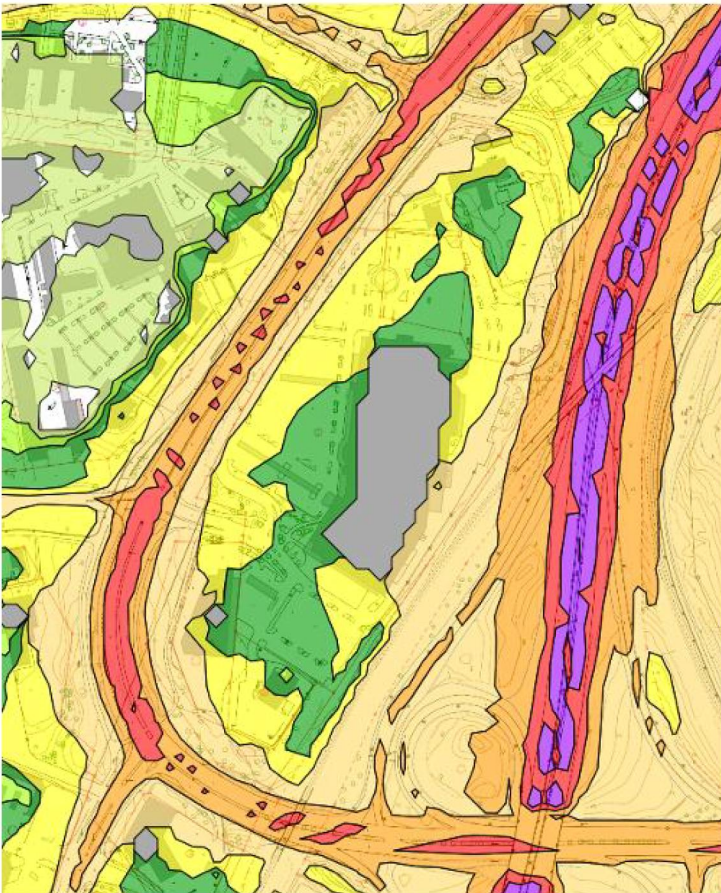




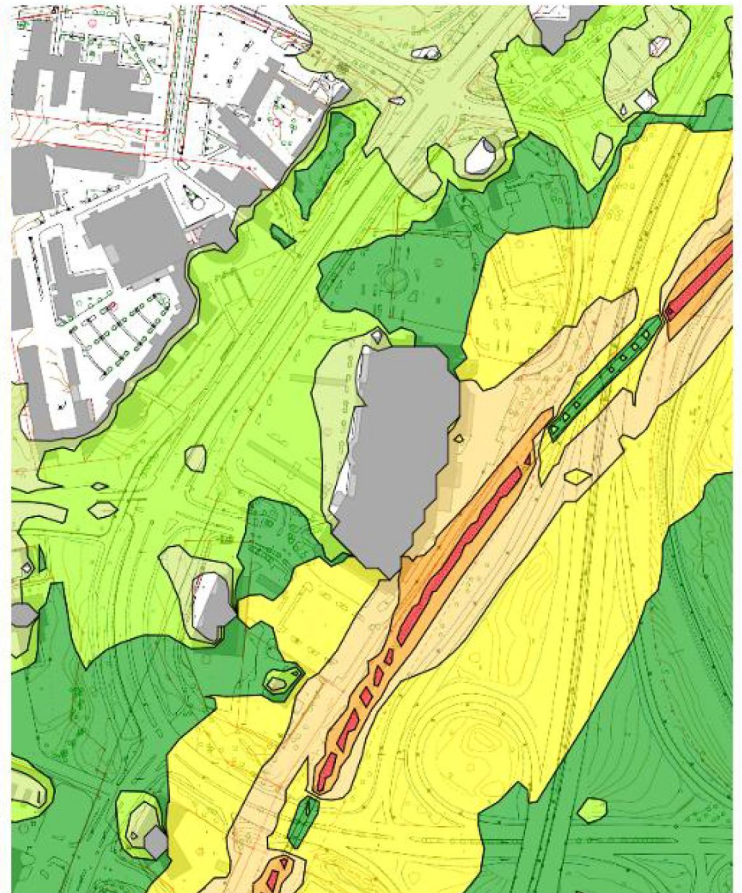
Tieliikennemelu, päivä, 2035 ennuste




Raideliikennemelu, päivä, 2035 ennuste





Tieliikennemelu, yö, 2035 ennuste





Raideliikennemelu, yö, 2035 ennuste


 Melutaso 75-80 dB

 Melutaso 65-70 dB

 Melutaso 55-60 dB

 Melutaso 70-75 dB

 Melutaso 60-65 dB

 Melutaso 50-55 dB

 Melutaso 45-50 dB